

T4 + P4 Wireless Remote RGBW controller



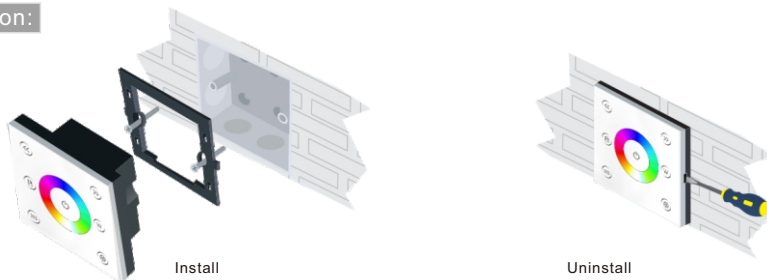
CE FC RoHS (FCC ID: 2APBAT1)

Technical Specs:

P4: RGBW Panel

- Input Voltage: DC12V-24V
- Load Current: 4A×4CH Max 16A
- Grey Scale Level: 4096×4
- Max Output Power: 192W/384W(12V/24V)
- Working Temperature: -20°C~55°C
- Dimensions: L86×W86×H36(mm)
- Weight(N.W): 190g

Installation:

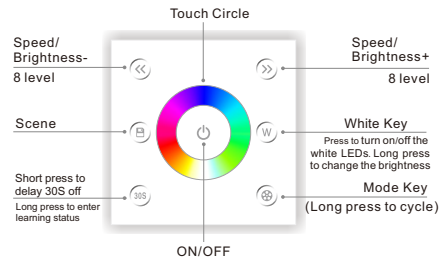


Wireless Remote (T4)

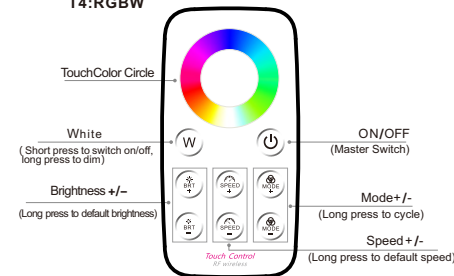
- Working Voltage: 3V(CR2032)
- Working Frequency: 433.92MHz
- Remote Distance: 30m
- Working Temp: -20°C-55°C
- Dimensions: L106×W56×H9(mm)
- Weight(N.W.): 40g

Key Functions:

P4: RGBW Panel



T4:RGBW



- ※ Long press to turn on/off the buzzer.
- ※ Short press to call scene, long press to save scene.
- ※ Hold the , keys for 2 second, the controller will restore default and restart automatically.
- ※ Short press , key under static to adjustable brightness; short press , key under dynamic to adjustable speed, long press the brightness.

RGBW MODE:

NO.	MODE	NO.	MODE
1	RGB CHANGE	2	COLOR CHANGE
3	WHITE FLASH	4	RGB FADE
5	COLOR FADE	6	RG FADE
7	RB FADE	8	GB FADE
9	WHITE FADE	10	ALL MODE CYCLE

※ The Learning ID Method of Remote Control:

Remote control has been matched to the receiver before leave factory, if deleted accidentally, you can learn ID as follow.
Learning ID: Long press the key on the panel, to enter the learning mode, then press any key on the remote control, activated.
Noticed: Panel P4 can only learn remote control T4. When the light of key on the panel keeps on, it will enter into learning mode.

※ Notice: The remote control will enter dormant status without operation for 30 seconds, please press any key to reactive it.

Wiring Diagram:

